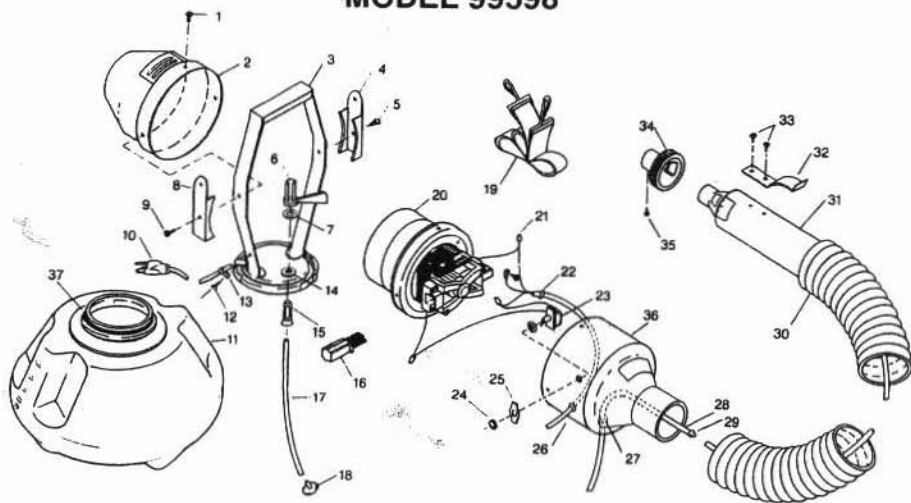


## MODEL 99598



### Parts List for Model 99598

| Figure No. | Part No.                                 | Description                           |
|------------|--|---------------------------------------|
| 1          | 802-162                                  | Housing Screw                         |
| 2          | 952-650                                  | Intake Housing                        |
| 3          | 952-602                                  | Handle and Frame Assembly             |
| 4 & 8      | 953-692                                  | Strap Hangers                         |
| 5 & 9      | 802-117                                  | Frame Screws                          |
| 6          | 953-050                                  | Valve Lever                           |
| 7          | 802-378                                  | Spring Washer                         |
| 10         | Available in Cord Kit Only               | Cord                                  |
| 11         | 952-552                                  | Canister                              |
| 12         | Available in Cord Kit Only               | Cord Clamp Screw                      |
| 13         | Available in Cord Kit Only               | Cord Clamp                            |
| 14         | 953-000                                  | Grommet (2 required)                  |
| 15         | 955-570                                  | Pressure Tube                         |
| 16         | 953-500                                  | Brush Kit (2 required)                |
| 17 & 28    | 926-670                                  | Supply Kit (Clear)                    |
|            | 954-320                                  | Supply Tube (Black)                   |
| 18         | 941-380                                  | Intake Strainer                       |
| 19         | 955-020                                  | Carrying Strap                        |
| 20         | Available in Motor Kit Only              | Motor                                 |
| 21         | Available in Motor, Kit, Switch Kit Only | Wire Connector                        |
| 22         | Available in Switch Kit Only             | Cord Stop                             |
| 23         | Available in Switch Kit Only             | Switch                                |
| 24         | Available in Switch Kit Only             | Switch Plate Nut                      |
| 25         | Available in Switch Kit Only             | Off/On Plate                          |
| 26         | 950-460                                  | Grommet                               |
| 27         | 801-276                                  | Push Nut                              |
| 29         | 954-330                                  | Adapter (to connect supply tube only) |
| 30         | 944-835                                  | Flex Hose                             |
| 31         | Available in Nozzle Outlet Kit Only      | Outlet Nozzle                         |
| 32         | 953-140                                  | Storage Hook                          |
| 33         | 802-043                                  |                                       |
| 34         | 952-630                                  |                                       |
| 35         | 801-796                                  |                                       |
| 36         | 941-400                                  | Outlet Housing                        |
| 37         | 941-492                                  | Canister Gasket                       |
| sNI        | 944-820                                  | Cord Kit                              |
| NI         | 944-830                                  | Motor Kit (110 Volt)                  |
| NI         | 944-825                                  | Switch Kit                            |
| NI         | 944-840                                  | *Outlet Nozzle Kit (Clear)            |
| NI         | 944-855                                  | Outlet Nozzle Kit (Black)             |

\*Outlet Nozzle Kit includes: Outlet nozzle, adjustable hub and supply tube with adapter.

\*\* NI - "Not Illustrated."

SIGN OF THE BEST BUY



## OPERATING INSTRUCTIONS ATOMIST ELECTRIC SPRAYERS

Models: 99598 and 99599

### SPECIAL NOTICE TO USERS

Damage in transit, wearing of nozzles or other parts, temperature, altitude, climatic factors and manners of use may effect the performance of this equipment. Careful maintenance, approved calibration procedures and repeated testing of output are necessary for safe and satisfactory results. Users must determine that the rate of application is proper for the chemical being used and the conditions under which it is being applied.

**BEFORE USE, READ THIS MANUAL COMPLETELY.  
KEEP MANUAL FOR FUTURE REFERENCE.**

### WARNINGS:

- **DO NOT** operate this sprayer in small, enclosed areas, or any area where any spray or foreign material could be sucked into the air intake.
- **DO NOT** overheat the motor. Be sure air intake is kept open at all times.
- **DO NOT** use this sprayer for paint spraying.
- **DO NOT** spray gasoline or other flammables.
- **DO NOT** alter the sprayer.
- **DO NOT** store chemicals in canister
- **ALWAYS READ AND FOLLOW** instructions for chemical to be applied.
- **IF SPRAY PATTERN BECOMES IRREGULAR**, turn sprayer off, remove the intake strainer and clean the screen.
- **IF CORD BECOMES DAMAGED**, it must be replaced before further use.
- **DO** Clean sprayer thoroughly after each use.

### SERVICE POLICY:

Do not attempt service or parts replacement beyond installation of parts listed in this manual. Service to the motor requires special equipment and discharge rates are carefully tested after service by factory personnel. For this reason, we recommend that you always return your sprayer to H.D. Hudson Manufacturing Co. for service.

When returning the sprayer, clean thoroughly. Units containing spray solution residue will not be accepted and returned to the sender freight collect. Pack the unit carefully, enclosing a note describing the problem and send to:

HUDSON®

H.D. Hudson Manufacturing Co.

200 W. 2nd St., Hastings, MN 55033-1142

1-800-745-2392 pro@hdhudson.com www.hdhudson.com

**NOTE: Buyer assumes all responsibility for safety and use not in accordance with instructions.**

## 99599 OPERATION

Fill the canister with the desired amount of spray material. Reposition the sprayer on canister top and snap clamp so it fits tightly. Check the switch to make sure it is "off" before plugging into a 110/120 volt AC outlet. Once operating, the discharge rate of the sprayer may be adjusted by turning the discharge control.

**Spray Adjustment:** The 99598 has an adjustment range of 1.5 to 5.3 gallons/hr. Spray direction is variable through all degrees between 35 upward to 35 downward.

**Wettable Powders:** The 99598 sprays wettable powders at a maximum discharge rate of 5.3 gallons/hr. Preliminary testing is recommended to insure that desired rate is obtainable. Shake or agitate solution periodically to keep powders in suspension.

**Spray Patterns:** The 99598 atomizes 95% of its output of less than 50 microns. Average particle size is 20 microns.

**After Use:** To store the 99598 or change spray materials, detach the sprayer from the canister and turn it "on" to flush out any spray material. The sprayer should be emptied of any unused spray solution and the canister should be washed after which the unit should be reassembled. After use with wettable powders, detach the canister, immerse the supply tube in clear water and flush until no residue can be seen in the supply tube. Wash the canister thoroughly.

## 99598 OPERATION

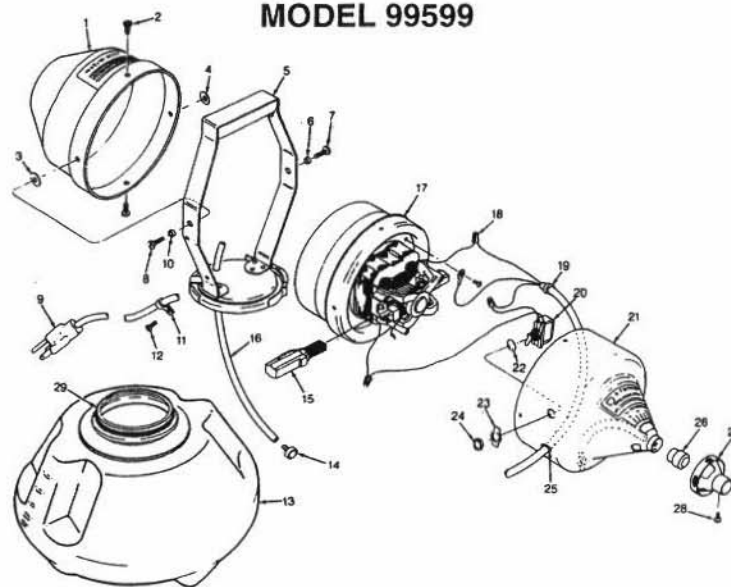
Fill the canister with the desired amount of spray material. Reposition the sprayer on the canister top and snap clamp it fits tightly. Check the spray selector valve on the tube that extends from the motor housing to the tank cover plate and set it according to the desired spray pattern. "Heavy" setting is achieved with valve lever turned full left (counter-clockwise.) This covers the valve opening and pressurizes the canister. Heavy setting produces a dense wetting spray ideal for application of residual or surface type spraying. "Fine" setting is achieved by turning valve lever full right (clockwise.) This opens the valve and allows air not utilized in spray discharge to escape. Fine setting produces ultra fine particles ideal for flying insect control. Check the switch to make sure it is "off" before plugging into a 110/120 Volt AC outlet for 99599. Once operating, the discharge rate may be adjusted by turning the discharge control at end of hose.

**Spray Adjustment:** The "fine" (unpressurized) setting has an adjustment rate of 1.5 to 3.5 gallons/hr. On "heavy" pressurized setting, the adjustment rate is 6 to 14 gallons/hr. Spray direction is variable through manipulation of the discharge hose.

**Wettable Powders:** Preliminary testing is recommended to insure that desired rate is obtainable. Shake or agitate solution periodically to keep powders in suspension.

**After Use:** When the unit is turned "off" after spraying, siphoning action may continue for a moment, resulting in a solid stream of spray material. To prevent this, tip the nozzle up straight as you switch "off" the motor thus flushing spray solution remaining in the discharge line back into canister. To store the 99599 or change spray materials, detach the sprayer from the canister and turn it "on" to flush out any spray material. The sprayer should be emptied of any unused spray solution and the canister should be washed after which the unit should be reassembled. After use with wettable powders, detach the canister, immerse the supply tube in clear water and flush until no residue can be seen in the supply tube. Wash the canister thoroughly.

## MODEL 99599



## Parts List for Model 99599

| Figure No. | Part No.  | Description               |
|------------|---|---------------------------|
| 1          | 952-650   | Intake Housing            |
| 2          | Available in Housing Kit Only                           | Housing Screw             |
| 3 & 4      | Available in Housing Kit Only                           | Spring Washer             |
| 5          | 952-602   | Handle and Frame Assembly |
| 6 & 10     | Available in Housing Kit Only                           | Shoulder Bushing          |
| 7 & 8      | Available in Housing Kit Only                           | Housing Screw             |
| 9          | Available in Cord Kit Only                              | Cord                      |
| 11         | Available in Cord Kit Only                              | Cord Clamp                |
| 12         | Available in Cord Kit Only                              | Cord Clamp Screw          |
| 13         | 952-552   | Canister                  |
| 14         | 941-380   | Intake Strainer           |
| 15         | 953-500   | Brush Kit (2 required)    |
| 16         | 927-730   | Supply Tube (20")         |
| 17         | Available in Motor Kit Only                             | Motor (120 volt)          |
| 18         | Available in Motor Kit, Switch Kit and Housing Kit Only | Wire Connector            |
| 19         | Available in Switch Kit and Housing Kit Only            | Cord Stop                 |
| 20         | Available in Switch Kit Only                            | Switch                    |
| 21         | 944-865   | Outlet Housing            |
| 22         | Available in Switch Kit Only                            | Lock Nut                  |
| 23         | Available in Switch Kit Only                            | Off/On Plate              |
| 24         | Available in Switch Kit Only                            | Switch Plate Nut          |
| 25         | 950-460   | Grommet (2 required)      |
| 26         | 952-610   | Nozzle (Brass)            |
| 27         | 952-630   | Adjustment Hub            |
| 28         | 801-796   | Hub Screw (Brass)         |
| 29         | 805-202   | Canister O-ring           |
| N1         | 946-705   | *Housing Kit              |
| N1         | 944-825   | Switch Kit                |
| N1         | 944-820   | Cord Kit                  |
| N1         | 944-850   | Motor Kit - 99598         |

\*Housing kit includes 1 ea.: #1, 14, 16, 21, 25, 26, 27, 28 plus other parts as marked on above list

**IF YOU HAVE QUESTIONS REGARDING YOUR SPRAYER,  
PLEASE CALL 1-800-745-2392**